

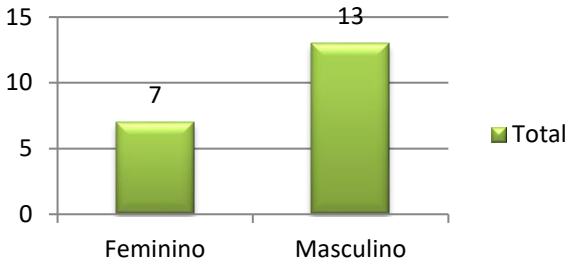
# MONITORAMENTO ARUJÁ

## ACIDENTE DE TRABALHO

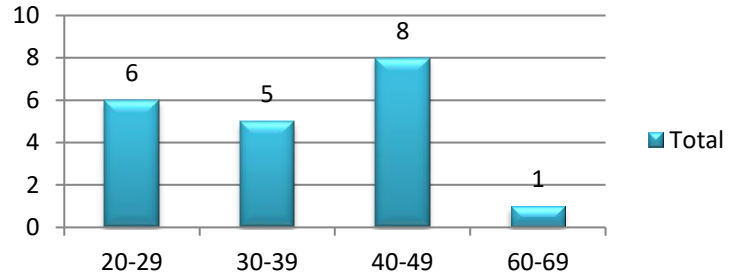
### MAIO 2024

Casos	20
C.I. 100 hab.	0,20

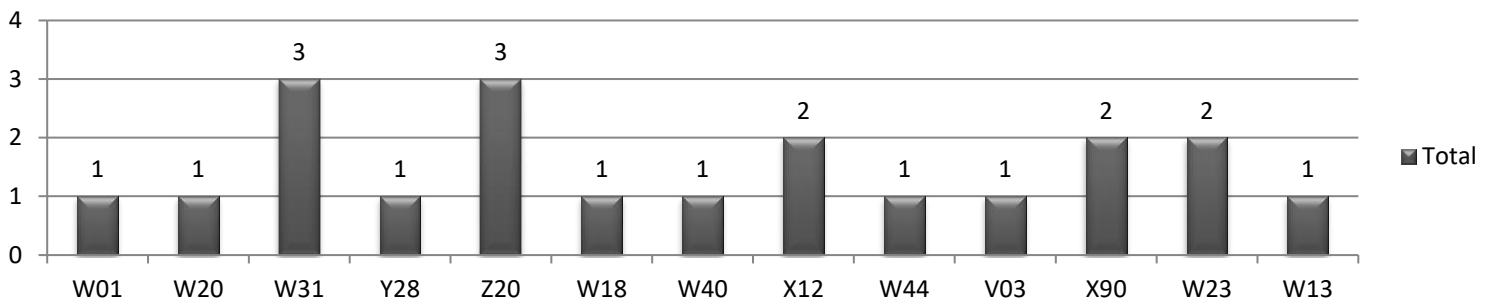
#### SEXO



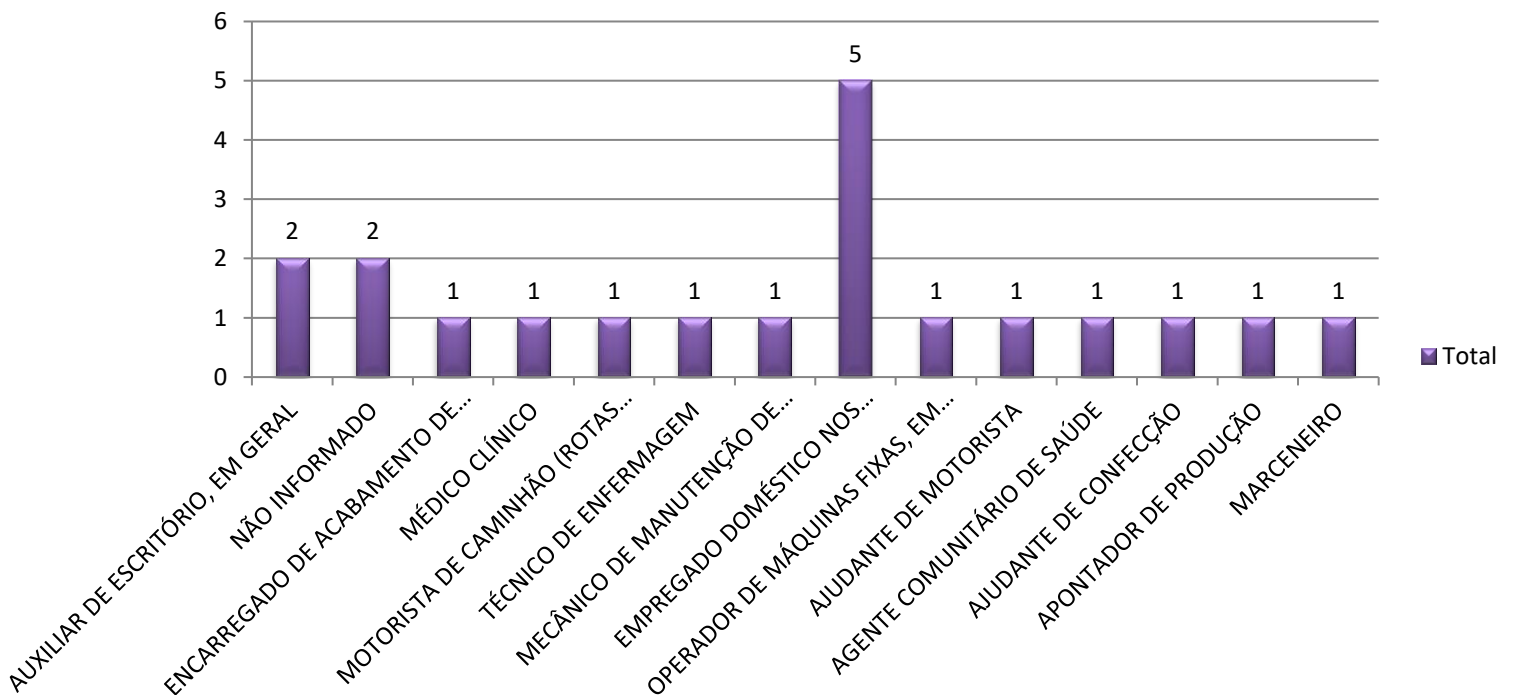
#### FAIXA ETÁRIA (Intervalo de 10 anos)



#### CAUSAS DE ACIDENTES MAIS FREQUENTES (CID-10)



#### OCUPAÇÕES MAIS FREQUENTES (CBO)



#### UNIDADE DE SAÚDE

